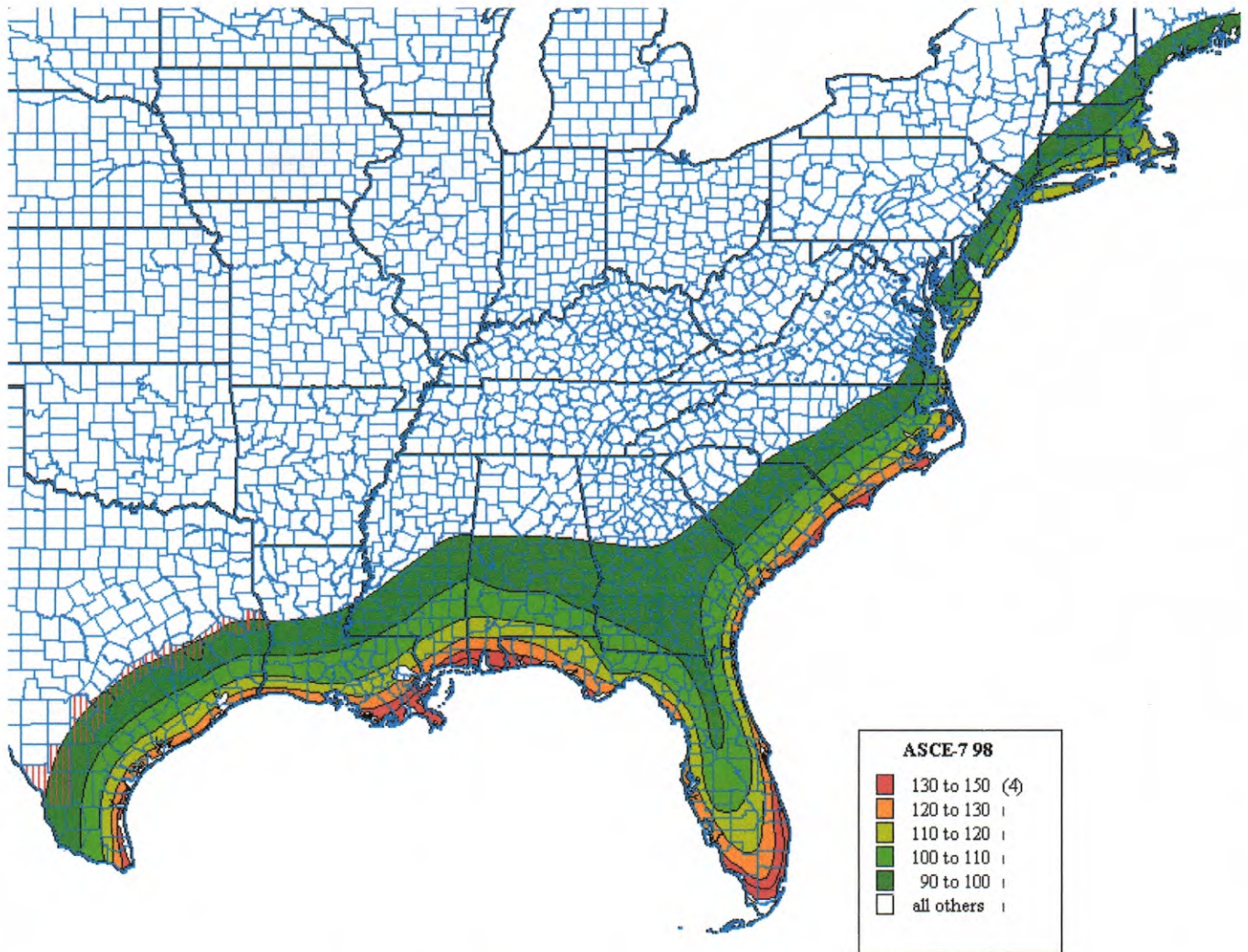


Hurricane Prone Regions Of The Contiguous U.S.



This map is based upon the *Basic Wind Speed* map given in ASCE 7-98 *Minimum Design Loads for Buildings and Other Structures*. It is used or referenced in almost all current building codes and design standards dealing with wind load design for either residential or commercial construction in the U.S. All colored areas represent *hurricane prone regions*, as defined in ASCE 7-98. Wind speed values given correspond to the design 3-second gust at an elevation of 33 feet above the ground in relatively flat, open country (i.e. "Exposure C").